



PUBLIC MUTUAL

WHOLLY-OWNED SUBSIDIARY OF PUBLIC BANK

RETAIN YOUR EMPLOYEES WITH THE PRS

PUBLIC MUTUAL'S PRS VESTING PROGRAMME
FOR EMPLOYERS & SALARY DEDUCTION
PROGRAMME FOR EMPLOYEES



Nurturing Your Investments With Care

www.publicmutual.com.my



PUBLIC MUTUAL BERHAD (197501001842 (23419-A))



Brains, like hearts, go where they are appreciated.

~ Robert McNamara, former president of Ford Motor Company

RETAIN YOUR EMPLOYEES WITH THE PRS



Employees in Malaysia: TOP 3 REASONS TO STAY¹



ATTRACTIVE
SALARY &
BENEFITS



HEALTHY
WORK-LIFE
BALANCE



STRONG
MANAGEMENT

A survey¹ highlights that an attractive salary and benefits are the main reasons for employees in Malaysia to stay with a company.

If a staff leaves, the process of hiring and onboarding someone new can be tedious and costly. As a caring employer, you can retain your employees by offering additional benefits through our Private Retirement Scheme (PRS) Vesting Programme.

Our PRS is open to both employers and employees via



PRS Vesting Programme

(For Employers)



Salary Deduction Programme

(For Employees)

¹ 2022 Employer Brand Research Report - Malaysia by Randstad

Corporate PRS Vesting Programme

Employees are the true assets of an organisation, especially the ones who work tirelessly to create a successful functioning organisation. Thus, rewarding and retaining star/key employees should be an organisation's priority.

Our Corporate PRS Vesting Programme can help your organisation retain employees while enjoying tax deductions.



TALENT RETENTION

Employers can make use of the Corporate PRS Vesting Programme to retain productive employees and gain loyalty.



CUSTOMISED SOLUTIONS

Employers can decide on the terms and conditions that employees have to fulfil in order to be rewarded by the company via the Corporate PRS Vesting Programme.



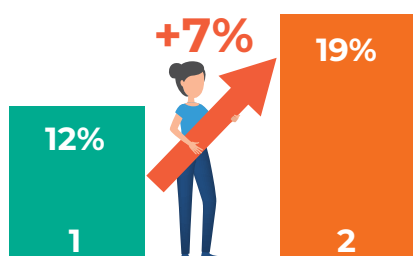
TAX DEDUCTIBLE

Employer contributions into the PRS on behalf of the employees are eligible for tax deductions (up to 19% of employees' remuneration, inclusive of the mandatory retirement scheme).



RIGHT TO CLAW BACK CONTRIBUTIONS

The employer maintains the right to claw back the contributions if employees do not fulfil the vesting conditions.



Tax deduction for contributions made by Employers

Example
Kreative Sdn Bhd made the following contributions for the accounting period ending 31 December 2020:

- (a) EPF = 12% of employees' remuneration; and
- (b) PRS funds = 7% of employees' remuneration

Total employees' remuneration for the period was RM300,000.

- Allowable deduction to the company under subsection 34(4) of the Income Tax Act is RM57,000 (RM300,000 x 19%).

Source: PPA Website>Joining PRS>PRS For Employers

Benefits to Employees:

- Free Personal Accident insurance / takaful coverage (applicable to Public Mutual Members aged 18-59)²
- Savings in PRS can serve as an additional pillar for retirement savings

² Subject to terms and conditions.

Why Choose The Public Mutual Corporate PRS Vesting Programme?

The employer has the flexibility to contribute according to customised vesting terms. Below, you'll find three unique vesting plans for your consideration and selection:

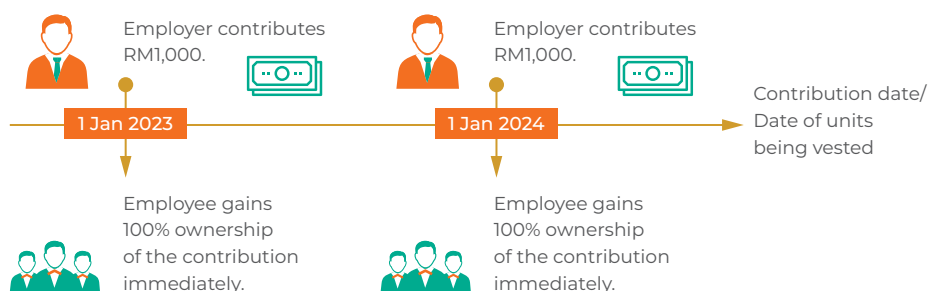


IMMEDIATE VESTING

Your contributions will be vested immediately to the employee.

Illustration:

Assuming the employer contributes RM1,000 to an employee annually.

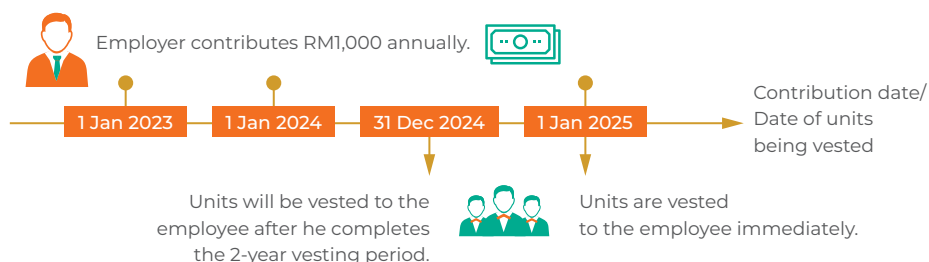


STRAIGHT VESTING

Upon fulfilling the stipulated number of years of service, all unvested contributions prior to the vesting date as well as subsequent contributions will be immediately vested to the employee.

Illustration:

Assuming the employer contributes RM1,000 annually to an employee, with a vesting period of 2 years.



REVOLVING VESTING

The contributions will be vested to the employee upon the completion of every x number of years of service and the vesting schedule repeats itself.

Illustration:

Assuming the employer contributes RM1,000 annually to an employee, with a vesting cycle of every 2 years.



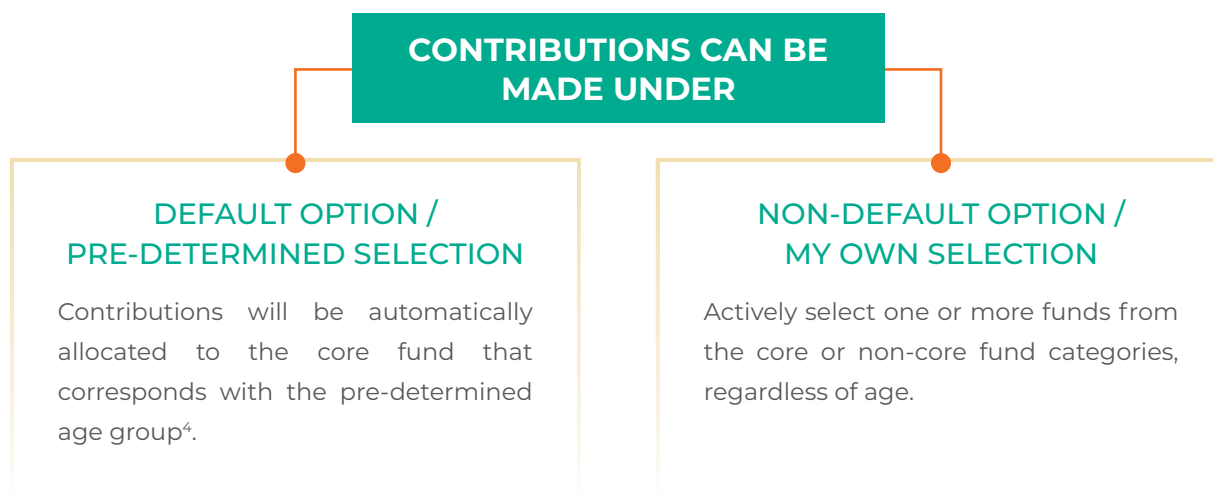
Salary Deduction Programme

As a caring employer, you can inculcate a good savings habit among your employees by encouraging automated savings via the convenience of salary deductions. Such an arrangement allows employees to effortlessly build up additional savings for their retirement. The PRS Salary Deduction Programme allows companies to play a proactive and vital role in ensuring that their employees are prepared for their retirement.

Benefits to Employees:

- Regular contributions through automated payroll deductions
- Personal tax relief of up to RM3,000³
- Free Personal Accident insurance / takaful coverage (applicable to Public Mutual Members aged 18-59)²
- Nomination of up to 6 persons and a specified percentage allocation of the PRS balance to be paid to the nominee(s)
- Money and accrued benefits in PRS are protected from creditors
- Low initial contribution
- Convenient monitoring through Public Mutual Online (PMO) or the PMO PLUS mobile application anytime, anywhere.

How does the Private Retirement Scheme Work?



Employees have the right to choose their preferred funds based on their financial goals and risk appetite. Where an employee does not make a fund selection, the Default Option applies.

² Subject to terms and conditions.

³ Including tax relief for deferred annuity. Tax relief is valid until year 2025.

⁴ The age group may be subject to change from time to time as determined by the relevant authorities.

Choice of PRS Funds

Public Mutual offers 6 core PRS funds and 3 non-core funds:

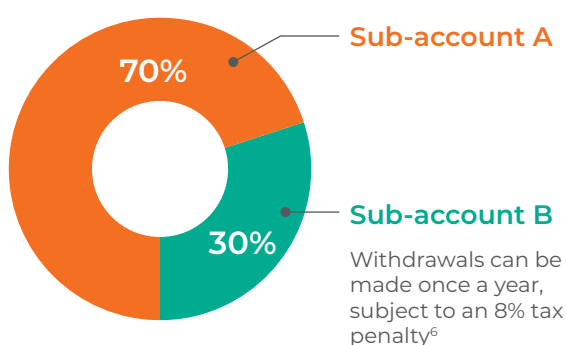
Core Funds (Open for Default and Non-Default Options)

AGE GROUP ⁴ (Default Option)	CONVENTIONAL SERIES	SHARIAH-BASED SERIES
Below 45	Public Mutual PRS Growth Fund (PRS-GRF)	Public Mutual PRS Islamic Growth Fund (PRS-IGRF)
45 to below 55	Public Mutual PRS Moderate Fund (PRS-MDF)	Public Mutual PRS Islamic Moderate Fund (PRS-IMDF)
55 and above	Public Mutual PRS Conservative Fund (PRS-CVF)	Public Mutual PRS Islamic Conservative Fund (PRS-ICVF)

Non-core Funds (Open for Non-default Option only)

CONVENTIONAL SERIES	SHARIAH-BASED SERIES
Public Mutual PRS Equity Fund (PRS-EQF)	Public Mutual PRS Islamic Strategic Equity Fund (PRS-ISEQF)
Public Mutual PRS Strategic Equity Fund (PRS-SEQF)	

Your contributions will be maintained in two separate Sub-accounts:



Full withdrawal (from both Sub-account A and B) can be made upon:

- Reaching retirement age⁵
- Death
- Permanent departure from Malaysia
- Permanent Total Disablement (PTD) / Serious Disease (SD) / Mental Disability (MD)

You can make pre-retirement withdrawals for the following purposes (without incurring the 8% tax penalty)⁶

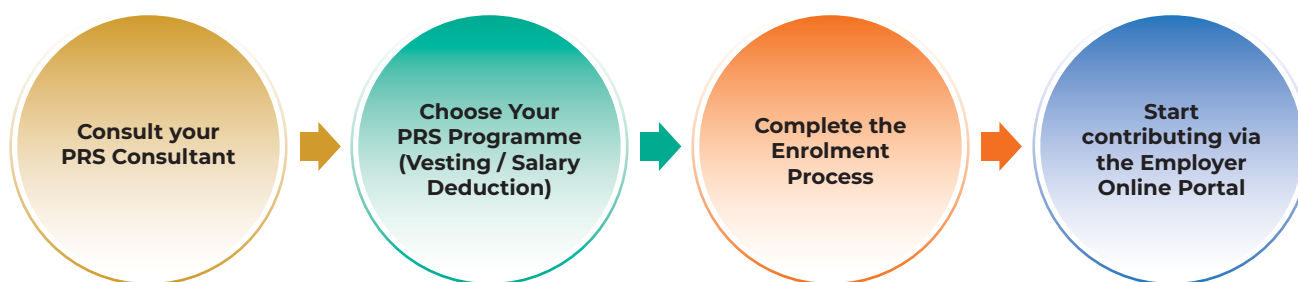
- Housing purposes (From Sub-account B)
- Healthcare purposes (From Sub-account B)

⁴ The age group may be subject to changes as determined by the relevant authorities from time to time.

⁵ Members are eligible to make a full withdrawal upon reaching the age of 55. Securities Commission Malaysia may specify any other age threshold from time to time.

⁶ Subject to terms and conditions.

Steps to Start Your Corporate PRS Programme



WHY PUBLIC MUTUAL?



No. 1* in unit trusts and the Private Retirement Scheme (PRS)



Trusted by around 5 million accountholders nationwide



Has a wealth of more than 40 years of fund management experience



Strong and stable, a wholly-owned subsidiary of Public Bank

* In terms of total retail fund size managed amongst private unit trust companies and PRS providers in Malaysia. Source: The Edge-Lipper, 19 August 2024.

GET IN TOUCH WITH US TODAY!



PRS Consultant



03-2022 6800 ext. 5600 / 5608 / 5613



www.publicmutual.com.my

Contributors are advised to read and understand the contents of the Disclosure Document for Public Mutual Private Retirement Scheme – Conventional Series and the Disclosure Document for Public Mutual Private Retirement Scheme – Shariah-based Series dated 28 August 2023, First Supplemental Disclosure Document for Public Mutual Private Retirement Scheme – Conventional Series and First Supplemental Disclosure Document for Public Mutual Private Retirement Scheme – Shariah-based Series dated 27 September 2024, as well as the relevant fund's Product Highlights Sheet (PHS) before contributing.

Contributors should understand, compare and consider the risks, fees, charges and costs involved in contributing to the PRS fund(s). A copy of the Disclosure Document, First Supplemental Disclosure Document and PHS can be viewed at our website at www.publicmutual.com.my. Contributors should make their own assessment of the merits and risks of the contribution. If in doubt, contributors should seek professional advice.

Please refer to www.publicmutual.com.my for our investment disclaimer.

Branches/Customer Service Centres

WEST MALAYSIA

Customer Service Centre
Tel: 03-2022 5000

Mutual Gold Centre
Tel: 03-2022 5000

1 Utama Shopping Centre
Tel: 03-2022 5000

Alor Setar
Tel: 04-7366 500 Fax: 04-7364 655
E-mail: aor@publicmutual.com.my

Bangsar
Tel: 03-2022 5000 Fax: 03-2283 5739
E-mail: kls@publicmutual.com.my

Batu Pahat
Tel: 07-4363 500 Fax: 07-4326 588
E-mail: bpt@publicmutual.com.my

Cheras
Tel: 03-2022 5000 Fax: 03-9132 1022
E-mail: chr@publicmutual.com.my

Damansara Perdana
Tel: 03-2022 5000 Fax: 03-7722 2475
E-mail: dsp@publicmutual.com.my

Ipoh
Tel: 05-2462 500 Fax: 05-2559 859
E-mail: iph@publicmutual.com.my

Johor Bahru
Tel: 07-3607 500 Fax: 07-3548 600
E-mail: jhb@publicmutual.com.my

Klang
Tel: 03-2022 5000 Fax: 03-3323 5632
E-mail: kel@publicmutual.com.my

Kluang
Tel: 07-7391 500 Fax: 07-7736 195
E-mail: klg@publicmutual.com.my

Kota Bharu
Tel: 09-7263 500 Fax: 09-7476 026
E-mail: kbr@publicmutual.com.my

Kuala Terengganu
Tel: 09-6321 500 Fax: 09-6317 030
E-mail: ktg@publicmutual.com.my

Kuantan
Tel: 09-5118 500 Fax: 09-5161 223
E-mail: ktn@publicmutual.com.my

Melaka
Tel: 06-2855 500 Fax: 06-2837 354
E-mail: mlk@publicmutual.com.my

Muar
Tel: 06-9562 500 Fax: 06-9536 830
E-mail: mua@publicmutual.com.my

Penang
Tel: 04-2196 500 Fax: 04-2295 171
E-mail: pen@publicmutual.com.my

Puchong
Tel: 03-2022 5000 Fax: 03-8065 3010
E-mail: pch@publicmutual.com.my

Seberang Perai
Tel: 04-5407 500 Fax: 04-5050 005
E-mail: sbp@publicmutual.com.my

Seremban
Tel: 06-6372 500 Fax: 06-7644 237
E-mail: sbm@publicmutual.com.my

Shah Alam
Tel: 03-2022 5000 Fax: 03-5513 9288
E-mail: sal@publicmutual.com.my

Sungai Petani
Tel: 04-4558 500 Fax: 04-4230 663
E-mail: sgp@publicmutual.com.my

Temerloh
Tel: 09-2955 500 Fax: 09-2968 060
E-mail: tml@publicmutual.com.my

EAST MALAYSIA

Bintulu
Tel: 086-859 500 Fax: 086-330 221
E-mail: btu@publicmutual.com.my

Kota Kinabalu
Tel: 088-327 500 Fax: 088-238 389
E-mail: bki@publicmutual.com.my

Kuching
Tel: 082-226 500 Fax: 082-239 825
E-mail: kch@publicmutual.com.my

Miri
Tel: 085-323 500 Fax: 085-416 195
E-mail: mri@publicmutual.com.my

Sandakan
Tel: 089-231 500 Fax: 089-222 889
E-mail: sdk@publicmutual.com.my

Sibu
Tel: 084-363 500 Fax: 084-330 269
E-mail: sbw@publicmutual.com.my

Tawau
Tel: 089-982 500 Fax: 089-765 326
E-mail: twu@publicmutual.com.my

HEAD OFFICE

Menara Public Bank 2,
No. 78, Jalan Raja Chulan,
50200 Kuala Lumpur.

CUSTOMER SERVICE HOTLINE

03-2022 5000

TELEPHONE

03-2022 6800

FACSIMILE

03-2022 6900

WEBSITE

www.publicmutual.com.my

FOLLOW US

